



POSSIBILITIES
THAT EXCITE





LEARNING SPARKS MANY POSSIBILITIES

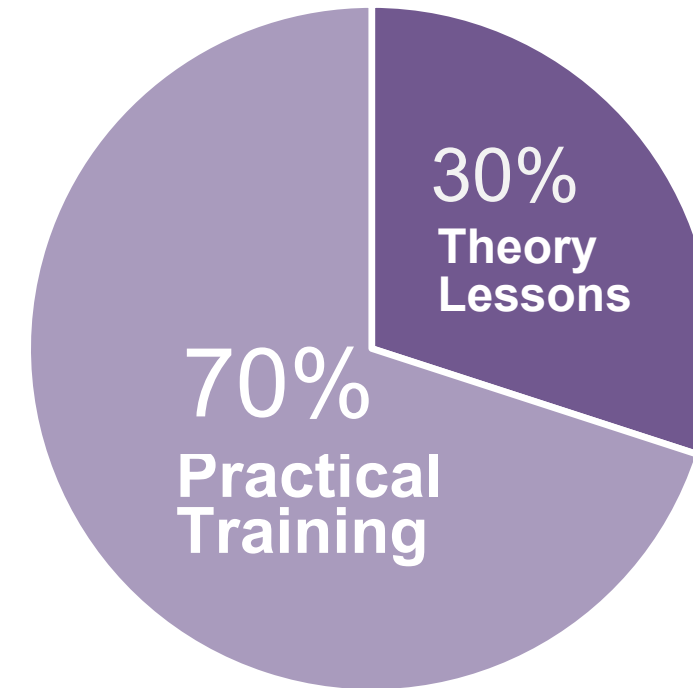
HANDS-ON, MINDS-ON, HEARTS-ON™ EDUCATION

Over 100
Courses

Authentic
Learning
Environment

State-of-the-Art
Facilities

Vibrant
Campuses



Explore the many possibilities that excite!



WELCOME TO ITE



**ITE College West
(2010)**

Enrolment	8,900
------------------	--------------

School of Hospitality

School of Business & Services

School of Electronics & Info-Comm Technology

School of Engineering



**ITE Headquarters
(2013)**



**ITE College Central
(2013)**

Enrolment	11,600
------------------	---------------

School of Design & Media

School of Business & Services

School of Electronics & Info-Comm Technology

School of Engineering



**ITE College East
(2005)**

Enrolment	9,200
------------------	--------------

School of Health Sciences

School of Business & Services

School of Electronics & Info-Comm Technology

School of Engineering

PROGRESSION PATHWAYS, TRAINING SCHEMES AND COURSES

ITE PROGRAMMES (FOR 2025 INTAKE)

Scan the QR Code
for the latest ITE
Course Booklet



<https://for.edu.sg/ite-course-booklet-2024>

8

Nitec Courses

42

3-Year Higher Nitec Courses

6

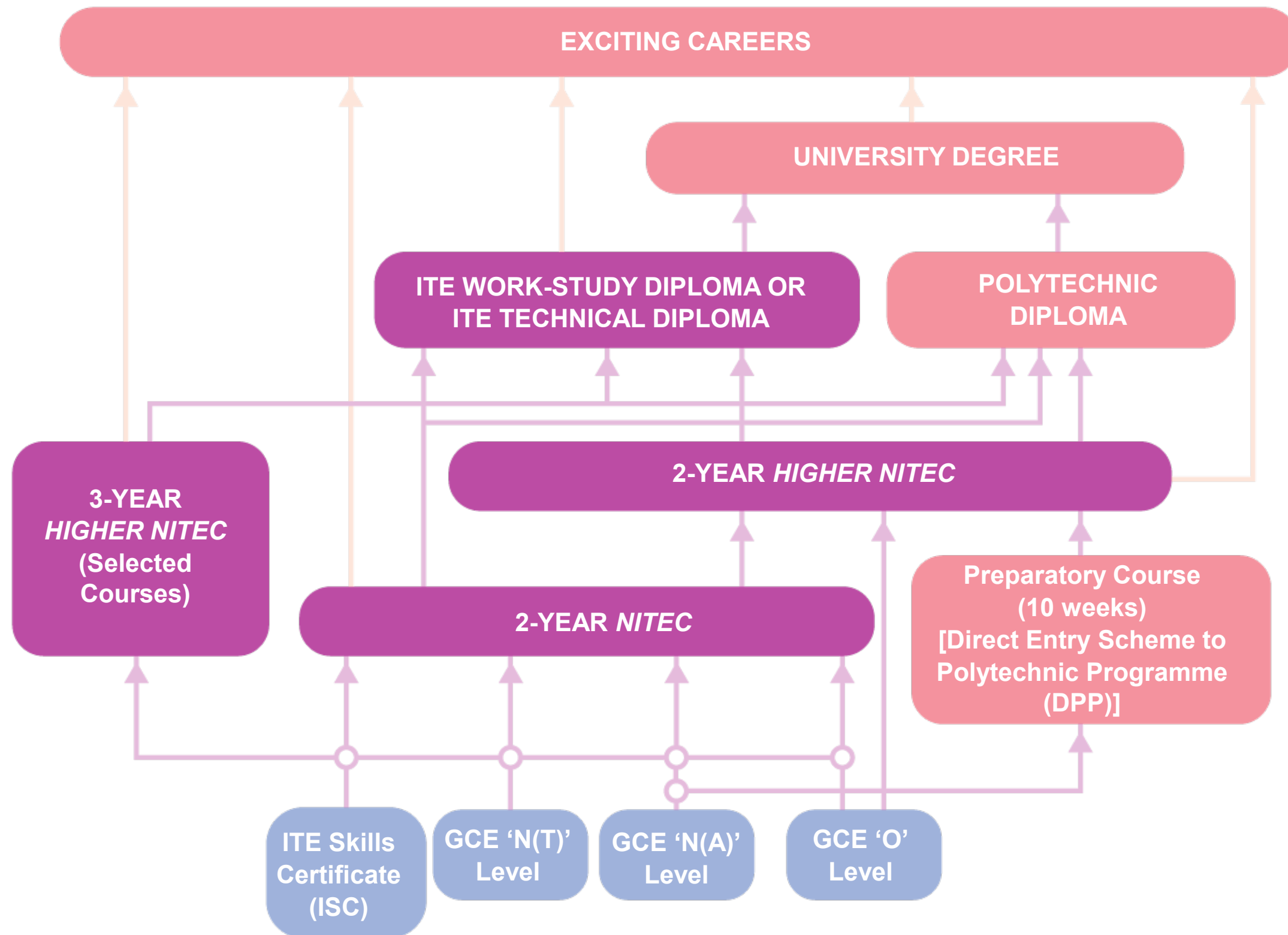
Technical Diplomas

42

Work-Study Diplomas



PROGRESSION PATHWAYS



EARLY ADMISSIONS EXERCISE (EAE)

Do you have a special talent or passion for a course in ITE?
Quick, secure your place with us before your GCE 'N' or 'O' Level exams!

Apply for a course based on your
aptitude and interest
(21 May – 28 May 2024)

Attend an **interview** and/or aptitude test,
if selected
(18 Jun – 24 Jul 2024)

Receive a **Conditional Offer** for
admission to ITE before your GCE 'N'
or 'O' Level exams!
(26 Aug – 30 Aug 2024)

Meet the **Minimum Entry Requirements**
of the course and you can join ITE



Scan to view
EAE video



“I have always been interested in how technology shapes our daily lives. To pursue this passion, I chose to apply for the EAE in *Higher Nitec* in Business Information Systems. This course equips me with the technical know-how needed to excel in the tech industry. It serves as a strong foundation for realising my long-term aspiration of becoming a respected IT leader capable of making an impact on the world!”

Jacob Goh Yu Siang
Higher Nitec in Business Information Systems
ITE College East

WHAT TO PREPARE FOR EAE APPLICATION

Submit Your Application Online

100-word write-up

- Why do you want to apply for the course?
- How are your talents and skills relevant to the course?

Note: You can apply for up to **3 courses**:
Nitec and *3-Year Higher Nitec* courses

Provide relevant supporting documents

- Certificates of Achievement
- Sample works/portfolios (if any)
- Testimonials
- CCA records
- Others

And if you are shortlisted...

Excel in Your Interview/Aptitude Test

Be prepared

- Bring along your supporting documents
- Demonstrate good understanding of the course and industry
- Share your passion and interests related to the course

DIRECT ENTRY SCHEME TO POLYTECHNIC PROGRAMME (DPP) COURSES & MINIMUM ENTRY REQUIREMENTS

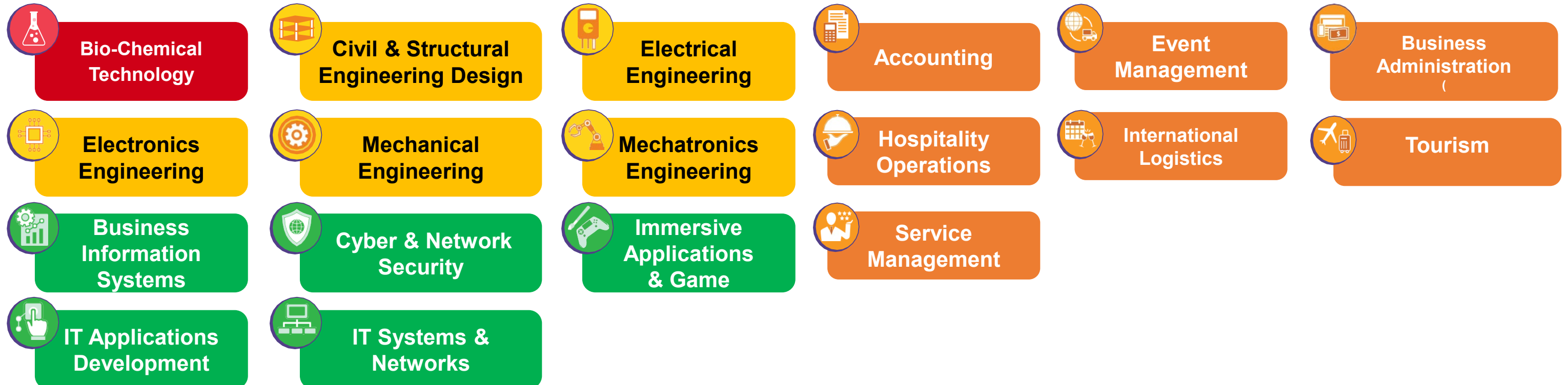
Applied Sciences / Engineering / Info-Communications Technology

Minimum Entry Requirements
 Grade 1 – 4 in English Language
 Grade 1 – 4 in Mathematics
 Grade 1 – 5 in three other subjects

Business & Services / Hospitality

Minimum Entry Requirements
 Grade 1 – 3 in English Language
 Grade 1 – 4 in Mathematics
 Grade 1 – 5 in three other subjects

You need English + Maths + 3 Best Subjects ≤ 19 points



AGGREGATE POINTS FOR APPLIED SCIENCES / ENGINEERING / INFO-COMMUNICATIONS TECHNOLOGY



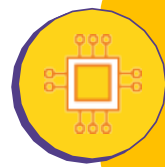
Bio-Chemical Technology
7 (CE)



**Civil & Structural
Engineering Design**
9 (CE)



Electrical Engineering
14 (CE) | 14 (CW)



Electronics Engineering
13 (CC)
14 (CE) | 14 (CW)



Mechanical Engineering
11 (CC)
14 (CE) | 14 (CW)



Mechatronics Engineering
12 (CC) | 13 (CW)



**Business Information
Systems**
10 (CE)



Cyber & Network Security
8 (CC) | 10 (CE) | 10 (CW)



**Immersive Applications
& Game**
9 (CC)



IT Applications Development
9 (CC) | 10 (CE) | 11 (CW)



IT Systems & Networks
10 (CC) | 11 (CE) | 11 (CW)

Legend

CC: ITE College Central CE: ITE College East CW: ITE College West
The points reflected above are indicative cut off points from 2023 intake

AGGREGATE POINTS FOR BUSINESS & SERVICES, AND HOSPITALITY



Accounting
8 (CC)
10 (CE) | 10 (CW)



Event Management
9 (CC)



Business Administration
7 (CC)
9 (CE) | 9 (CW)



Hospitality Operations
11 (CW)



International Logistics
11 (CE)



Tourism
10 (CW)



Service Management
11 (CW)



“The DPP provides me with an outstanding environment that allows me to level up my foundational skills through the bridging programme.”

WONG YIXIN
Higher Nitec in Cyber and Network Security
ITE College Central

Legend

CC: ITE College Central CE: ITE College East CW: ITE College West
The points reflected above are indicative cut off points from 2023 intake

MORE ON DPP

To get direct admission to a related diploma course at one of the polytechnics, you have to meet the following qualifying criteria:

<i>Higher Nitec Course</i>	Progress to 1 st Year in relevant Polytechnic Diploma Course	Progress to 2 nd Year in relevant Polytechnic Diploma Course
Applied Sciences	ITE GPA ≥ <u>2.5 points</u> (excluding CCA bonus points)	N.A.
Engineering and Info-Communications Technology	ITE GPA ≥ <u>2.5 points</u> (excluding CCA bonus points)	ITE GPA ≥ <u>3.5 points</u> (excluding CCA bonus points)
Business & Services	ITE GPA ≥ <u>3.0 points</u> (excluding CCA bonus points)	N.A.

3-YEAR *HIGHER NITEC* PROGRAMME

ITE introduced 3-Year *Higher Nitec* full-time programmes in Academic Year 2022.

Features



Attain a *Higher Nitec* qualification in 3 years



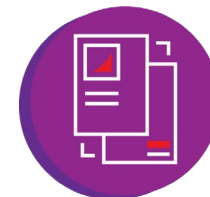
N(A) and N(T) students can apply with existing *Nitec* entry requirements



Gain exposure to modules in their sector in Year 1 before specialising later



'O' Level and DPP students with Minimum Entry Requirements join Year 2 directly



2 integrated industry attachments (IA) - 3 months in Year 2 and 6 months in Year 3



"The three-year *Higher Nitec* in IT Applications Development programme ignited my passion and interest in the field of IT technology. I was able to apply the tools I have learnt to overcome real work-life challenges effectively during my internship. Being in the accelerated pathway also trains me in my perseverance and time management."

CAROLINE GOH QIAN HUI
Higher Nitec in IT Applications Development
ITE College West



<https://foredu.sg/nitec-and-3-year-higher-nitec>

Scan to find out more!

3-YEAR *HIGHER NITEC* COURSES AGGREGATE POINTS (2024 intake)

Based on **Best 4 GCE 'N' Level subjects**, including pre-requisites and bonus points.

3-Year <i>Higher Nitec</i> Course	Aggregate Points
Electronics & Info-Comm Technology	
<i>Higher Nitec</i> in AI Applications	3 (CC) 5 (CW)
<i>Higher Nitec</i> in Business Information Systems	5 (CE)
<i>Higher Nitec</i> in Cyber & Network Security	4 (CC) 5 (CW) 5 (CE)
<i>Higher Nitec</i> in Data Engineering	7 (CW)
<i>Higher Nitec</i> in Electronics Engineering	7 (CC) 12 (CW) 16 (CE)
<i>Higher Nitec</i> in Immersive Applications & Game	3 (CC)
<i>Higher Nitec</i> in IT Applications Development	4 (CC) 13 (CE) 14 (CW)
<i>Higher Nitec</i> in IT Systems & Networks	6 (CC) 13 (CE) 15 (CW)
<i>Higher Nitec</i> in Security System Integration	8 (CE) 10 (CW)

3-YEAR *HIGHER NITEC* COURSES AGGREGATE POINTS (2024 intake)

Based on Best 4 GCE 'N' Level subjects, including pre-requisites and bonus points.

3-Year <i>Higher Nitec</i> Course	Aggregate Points
Business & Services	
<i>Higher Nitec</i> in Accounting	5 (CC) 6 (CE) 6 (CW)
<i>Higher Nitec</i> in Beauty & Wellness Management	7 (CE)
<i>Higher Nitec</i> in Business Administration	3 (CC) 3 (CE) 4 (CW)
<i>Higher Nitec</i> in Event Management	5 (CC)
<i>Higher Nitec</i> in Hairdressing & Salon Management	6 (CE)
<i>Higher Nitec</i> in Logistics & Supply Chain Management	8 (CE)
<i>Higher Nitec</i> in Passenger Services	5 (CC) 9 (CE)
<i>Higher Nitec</i> in Retail & Online Business	5 (CC) 8 (CE) 8 (CW)
<i>Higher Nitec</i> in Sport Management	4 (CC) 6 (CE) 6 (CW)
<i>Higher Nitec</i> in Tourism	6 (CW)

3-YEAR *HIGHER NITEC* COURSES AGGREGATE POINTS (2024 intake)

Based on Best 4 GCE 'N' Level subjects, including pre-requisites and bonus points.

3-Year <i>Higher Nitec</i> Course	Aggregate Points
Applied & Health Sciences	
<i>Higher Nitec</i> in Community Care & Social Services	6 (CE)
<i>Higher Nitec</i> in Opticianry	6 (CE)
<i>Higher Nitec</i> in Nursing	15 (CE)

3-YEAR *HIGHER NITEC* COURSES AGGREGATE POINTS (2024 intake)

Based on Best 4 GCE 'N' Level subjects, including pre-requisites and bonus points.

3-Year <i>Higher Nitec</i> Course	Aggregate Points
Engineering	
<i>Higher Nitec</i> in Applied Food Science	6 (CE)
<i>Higher Nitec</i> in Bio-Chemical Technology	3 (CE)
<i>Higher Nitec</i> in Chemical Process Technology	7 (CE)

NEW 3-YEAR *HIGHER NITEC* COURSES (FOR 2025 INTAKE)

Design & Media	Engineering	Electronics & Info-comm Technology	Hospitality
Communication Design Film & Video Production Interior & Product Design Technical Theatre & Production Visual Merchandising	Architectural Technology Civil & Structural Engineering Design Electrical Engineering Facilities Management & Engineering Integrated Mechanical & Electrical Design Landscape Management & Design Vertical Transportation	Operational & Information Technology	Culinary Arts Hospitality Operations Pastry & Baking

2-YEAR *NITEC* COURSES

ENGINEERING
Aerospace Avionics
Aerospace Machining Technology
Aerospace Technology
Automotive Technology
Digital & Precision Engineering
Mechanical Technology
Mechatronics & Robotics
Rapid Transit Technology

ITE DIPLOMAS (FOR ITE GRADUATES)

ITE OFFERS DIPLOMAS!

We have **two** types of Diploma programmes:
Work-Study Diploma and **Technical Diploma**

Our Diplomas fulfil the aspirations of our *Nitec* and *Higher Nitec* graduates for academic and career progression.

Students especially appreciate the **hands-on training mode** of these Diplomas, and our Diploma graduates enjoy **strong employment outcomes**, including the option to **further their studies** at local universities.



WHY ITE DIPLOMAS?

WORK-STUDY DIPLOMA (WSDIP)

STARTED IN 2018

- 2.5-year apprenticeship-based programme
- Curriculum co-designed with industry
- Earn a competitive starting salary and enjoy employee benefits
- Deepen skills through structured workplace learning and mentorship
- Get a fully-sponsored and nationally-recognised Diploma
- Opportunity for further academic progression

TECHNICAL DIPLOMA (TD)

FIRST TD INTRODUCED IN 2008

- 2 to 2.5 years of full-time study
- Curriculum co-designed with leading international Vocational Training and Education institutions
- Overseas learning experience in France, Germany, Hong Kong or Switzerland (depending on the course of study)
- Jointly certified by ITE and the partner institution
- Opportunity for further academic progression

ITE Technical DIPLOMA (International Partners)



Baden-Württemberg
MINISTERIUM FÜR KULTUS, JUGEND UND SPORT
(Germany)

Carl-Benz-Schule, Gaggenau

1. Technical Engineer Diploma in Automotive Engineering

Gottlieb-Daimler-Schule 1

2. Technical Engineer Diploma in Machine Technology



(Switzerland)

EHL Hospitality Business School

3. Technical Diploma in Hospitality & Hotel Management



(France)

Institut Lyfe

4. Technical Diploma in Culinary Arts



(Hong Kong)

Vocational Training Council

5. Technical Diploma in Beauty & Wellness Management
6. Technical Engineer Diploma in Civil & Structural Engineering



The ITE Technical Diploma in Machine Technology unlocked my full potential and **equipped me with the attitude, knowledge and skills I need to fulfil my dreams.**

MUHAMMAD AZRI BIN ALIAS
*Vehicle Assembly
Technologist, Hyundai Motor
Group Innovation Center
Singapore
TD in Machine Technology*

ITE WORK-STUDY DIPLOMA

A perfect solution for ITE graduates to gain a head start in your careers while pursuing a nationally recognised diploma.

70-80% on-the-job training + 20-30% classroom learning

Benefits

- Earn as you learn
- Get a fully sponsored and recognized Diploma
- Learn industry-relevant skills
- Obtain valuable work experience with career advancement
- Enjoy staff benefits and a monthly salary
- Sign-on incentive of \$5,000*



<https://for.edu.sg/wsdip-apply>

Scan to find out more!

* For fresh ITE graduates from relevant feeder courses who are Singapore Citizens and within three years of their graduation or Operationally Ready Date. Terms and conditions apply.



“Through ITE’s Work-Study Diploma programme, I was able to gain knowledge and work experience while earning a salary and Diploma. The work experience in particular, greatly built my confidence. No other programme would have given me that.”

MOHAMMAD HAFIZ BIN MOHAMADNOR

**Property Executive
(WSDip Graduate)
CBRE Singapore**

LIST OF WORK-STUDY DIPLOMAS

Engineering Sector

- Aircraft Cabin Engineering
- Aircraft Engine Maintenance
- Aircraft Maintenance Engineering
- Agriculture & Aquaculture Technology
- Arboriculture & Horticulture
- Architectural BIM & Design
- Automation Engineering
- Chemical Process Technology
- Electrical Engineering
- Facilities Management
- Land Transport Engineering (Rail)
- Land Transport Engineering (Vehicle)
- Marine & Offshore Engineering (Engineering Design)
- Marine & Offshore Engineering (Production)
- Mechanical Systems Engineering
- Mechanical & Electrical Services Supervision
- Microelectronics (Equipment)
- Microelectronics (Process)
- Port Automation Technology (in-service staff only)
- Security Systems Engineering
- Vertical Transportation

Business Sector

- Accountancy **NEW**
- Airport Operations
- Community Engagement & Development
- Customer Experience Management (Aviation)
- Customer Experience Management (Lifestyle & Consumer)
- Culinary Arts & Management
- Event Management
- E-commerce & Retail
- Fitness Management
- Hotel & Restaurant Management
- Lifestyle & Recreation Management
- Logistics & Supply Chain Management
- Nursing (in-service staff only) **NEW**
- Opticianry
- Patient Management & Services
- Rehabilitation Care
- Security Operations
- Tourism Management

Infocomm & Media Sector

- AI & Data Intelligence (AI) **NEW**
- AI & Data Intelligence (Data Engineering) **NEW**
- Cloud Management & Operations (Cloud Operations)
- Cloud Management & Operations (Infrastructure Support)
- Cyber Security & Forensics
- Data Centre Infrastructure & Operation
- Electronics & Computer Engineering **NEW** (Applied Electronics & AI)
- IT System Integration
- Media Communication & Digital Marketing

CO-CURRICULAR ACTIVITIES

Arts

Acoustic Pop Band
K-Pop Dance
Magic Club
Photography
Sand Animation
Visual Arts

Community

Care & Repair Club
Community Service Club
Rotaract Club
Safe Home Club

Sports & Games

Archery
Cycling
Karate
Rock Climbing
Swimming
Volleyball

Leadership

Bridge Leaders
Peer Support Leaders
Student Council
Student Ambassadors

Innovation & Enterprise

3D Printing Club
Cyber Games Club
Entrepreneurship Club
Investment Club
Robotics Club



DISCOVER ITE

Customer & Visitor Centres

ITE HQ & College Central

Address: Blk A, Level 2, 2 Ang Mo Kio Drive, Singapore 567720

Tel: 6590 2211

Email: college_central@ite.edu.sg

ITE College East

Address: Administration Block, Level 1, 10 Simei Ave, Singapore 486047

Tel: 6590 2262

Email: college_east@ite.edu.sg

ITE College West

Address: Blk 2, Level 2, 1 Choa Chu Kang Grove, Singapore 688236

Tel: 6590 2628

Email: college_west@ite.edu.sg

*All Centres are open from 8:30am – 6:00pm,
Mondays to Fridays (closed on Weekends and Public Holidays)

 www.ite.edu.sg

 facebook.com/ITESpore

 instagram.com/itespore

 tiktok.com/@itesingapore

 youtube.com/itespore

 x.com/ITESpore

 linkedin.com/school/ite-spore

© Institute of Education, Singapore (2024). All rights reserved. No part of this publication may be reproduced, distributed, stored in retrieval system, or transmitted in any form or by any means, including photocopying, recording or other electronic and mechanical methods, without the prior written permission of the Institute of Technical Education, Singapore.