

Introduction to Core Curriculum

2025 Secondary 1 Cohort

6 Jan 2025





Vision:
**Every BPian
A Passionate and Future-Ready Learner, and
an Inspiring Leader of Good**

Mission:
**To nurture Learner-Leaders who
Think, Care and Serve**

School Values:
Respect, Resilience, Responsibility, Integrity and Care for Others



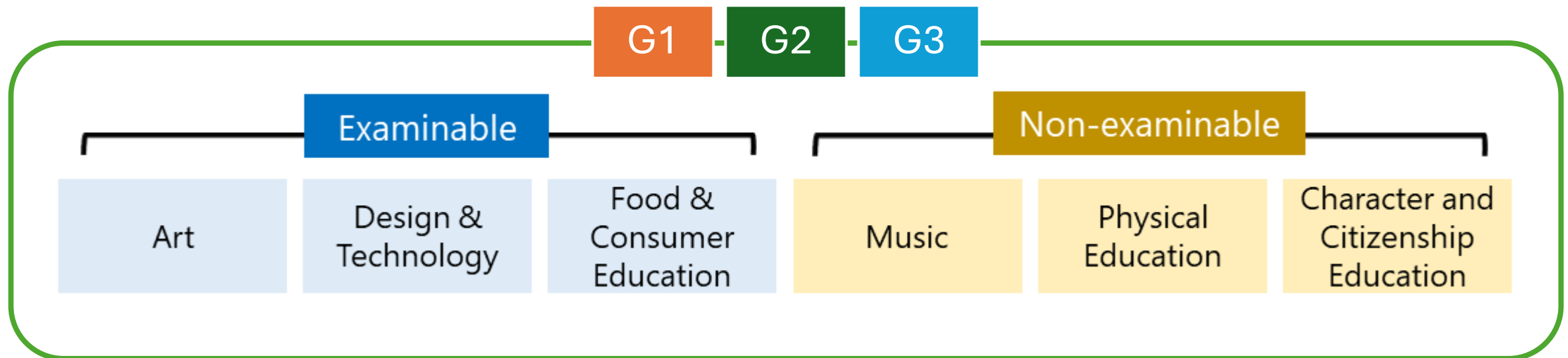
https://www.youtube.com/watch?v=ro_sp0B6uGE

00:00 – 02:18



What you can study at Secondary 1:

Common Curriculum



You will take these subjects in your form class.

What you can study at Secondary 1:



Subjects offered at G1, G2 and G3

G1

- English
- Mother Tongue
- Mathematics
- Science
- Humanities

G2

- English
- Mother Tongue
- Mathematics
- Science
- History
- Geography
- Literature

G3

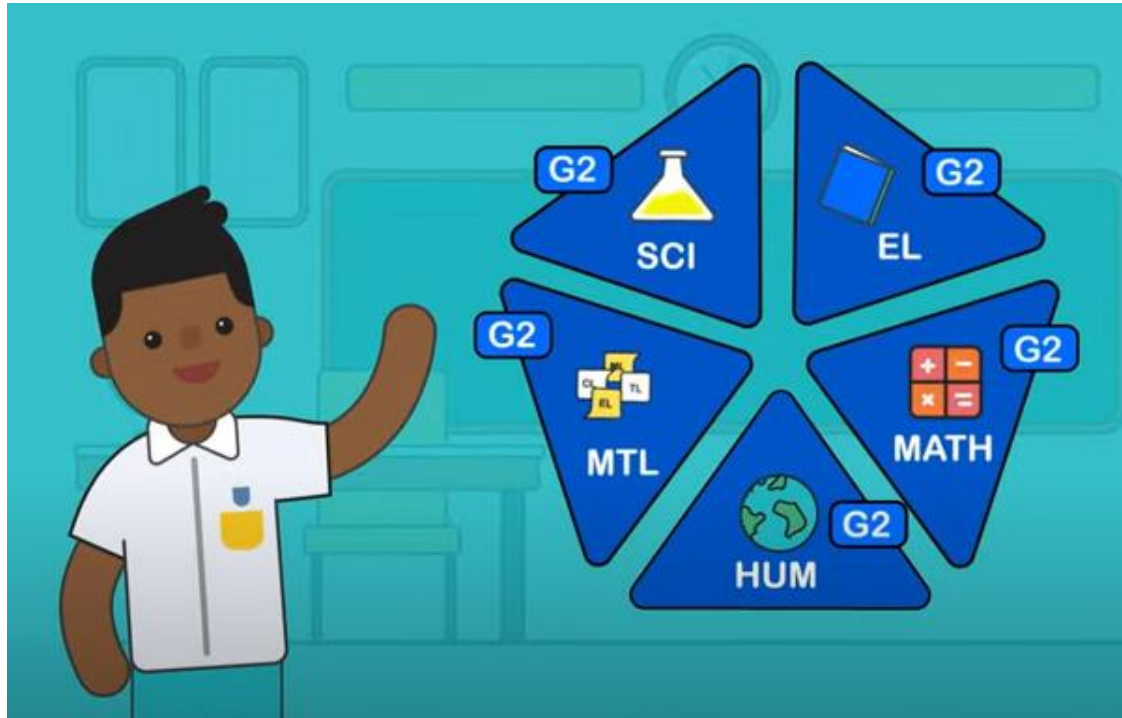
- English
- Mother Tongue / Higher Mother Tongue
- Mathematics
- Science
- History
- Geography
- Literature

You will be grouped in different classes based on the subject level for each subject.

Do you remember Tim from the video?

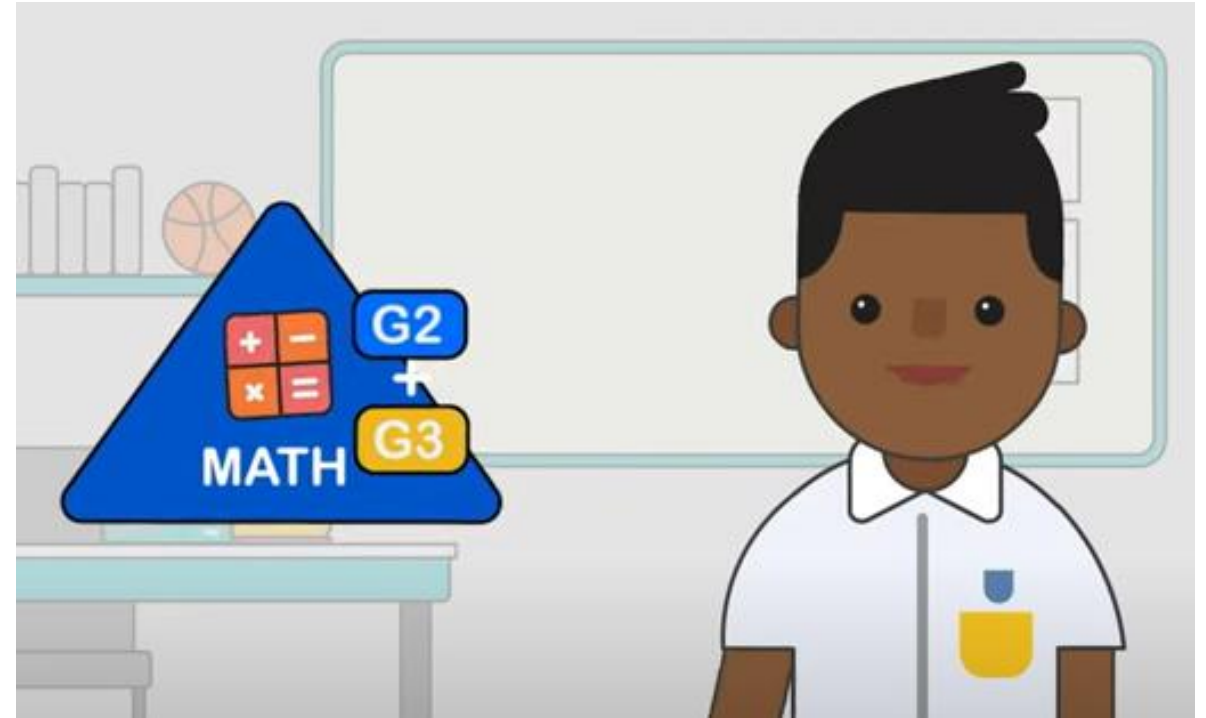


At the start of Sec 1



Tim entered the school in **Posting Group 2**, and took all subjects at G2.

At the end of Sec 1 Semester 2



Tim did well in Maths, and was offered the option to take **Maths at G3**.



For students taking subjects at G1 or G2, you have 2 opportunities to take subjects at a more demanding level.

At the end of Semester 1

- English
- Mother Tongue
- Mathematics
- Science

Take at more demanding level in **Semester 2**

At the end of Semester 2

- English
- Mother Tongue
- Mathematics
- Science
- Humanities (History, Geography, Literature)

Take at more demanding level in **Secondary 2**

Criteria: 75% or higher in the specific subject + Teachers' recommendation



Assessment Schedule

	Continual Assessment 1	Continual Assessment 2	Semestral Assessment
When?	Term 1 & 2	Term 3	Term 4
What?	Performance tasks, projects, tests, quizzes		End-of-year Exam
How much?	40%		60%

Assessment Grading

G1 Grades	Mark Range
A	75 & above
B	70 – 74
C	60 – 69
D	50 – 59
E	49 & below

G2 Grades	Mark Range
1	75 & above
2	70 – 74
3	65 – 69
4	60 – 64
5	50 – 59
6	49 & below

G3 Grades	Mark Range
A1	75 & above
A2	70 – 74
B3	65 – 69
B4	60 – 64
C5	55 – 59
C6	50 – 54
D7	45 – 49
E8	40 – 44
9	39 & below

Secondary School Experience and Post-Secondary Pathways Under Full SBB

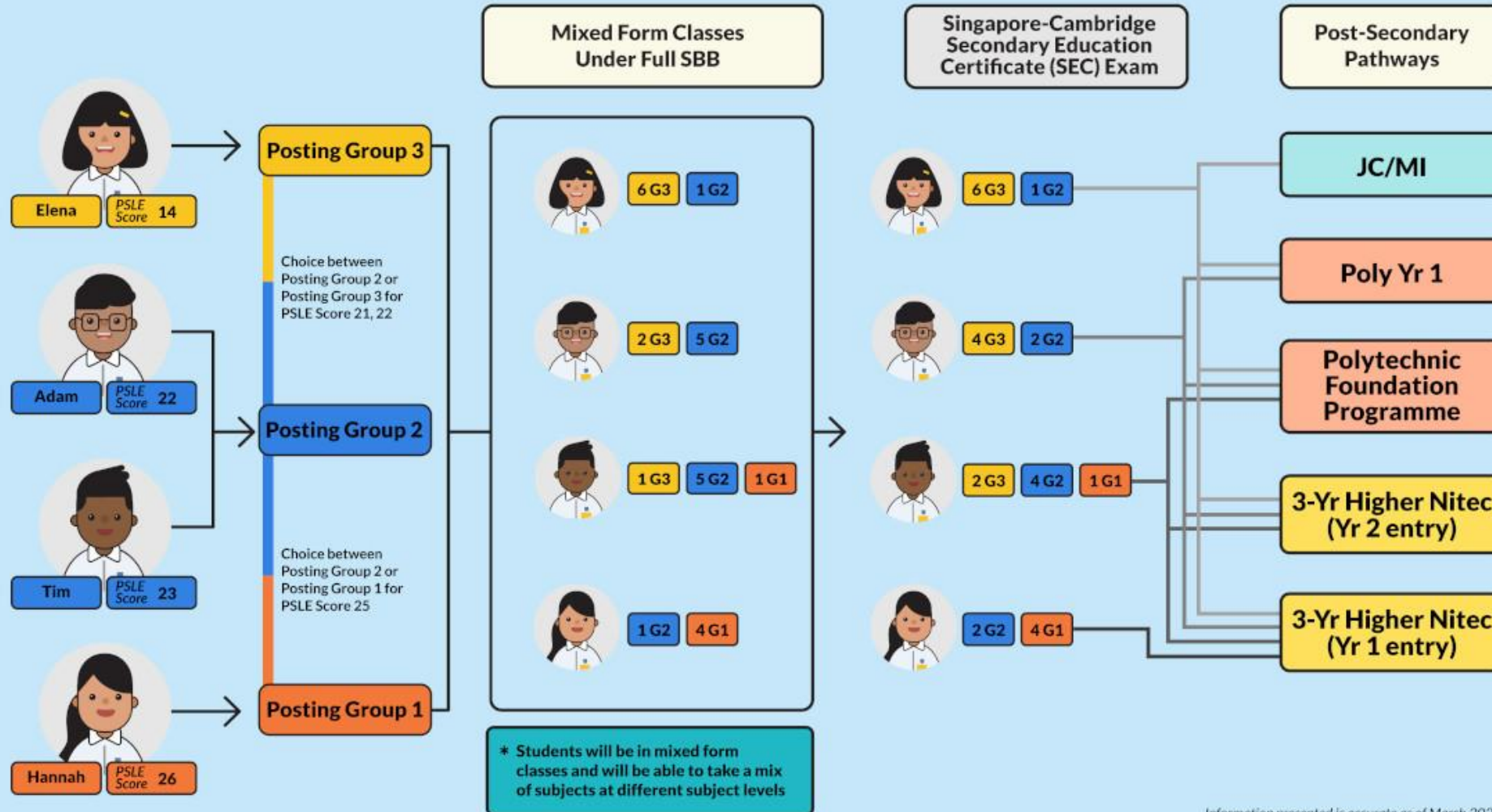


Ministry of Education
SINGAPORE



承先启后 武中 65 继往开来
EMBRACING OUR PAST
ILLUMINATING OUR FUTURE

From 2024, you can take subjects at different levels, eg. G1, G2 or G3, which suit your strengths, interests and learning needs. Along the way, your teachers will guide you to make adjustments as needed. At the end of Secondary Four, all students will take the Singapore-Cambridge Secondary Education Certificate examinations. There will be more options for your post-secondary pathways, and many more opportunities to excel in the pathway you choose. The future is yours to make!



Timetable



Odd Week	Day 1	Day 2	Day 3	Day 4	Day 5
Even Week	Day 6	Day 7	Day 8	Day 9	Day 10 (BL Day)

Blended Learning Day (BL Day)

- You do not need to report to school. Learning will take place at home.
- You will be briefed by your subject teachers on what are assigned.
- You are also given time to plan your own learning that is not within the curriculum.