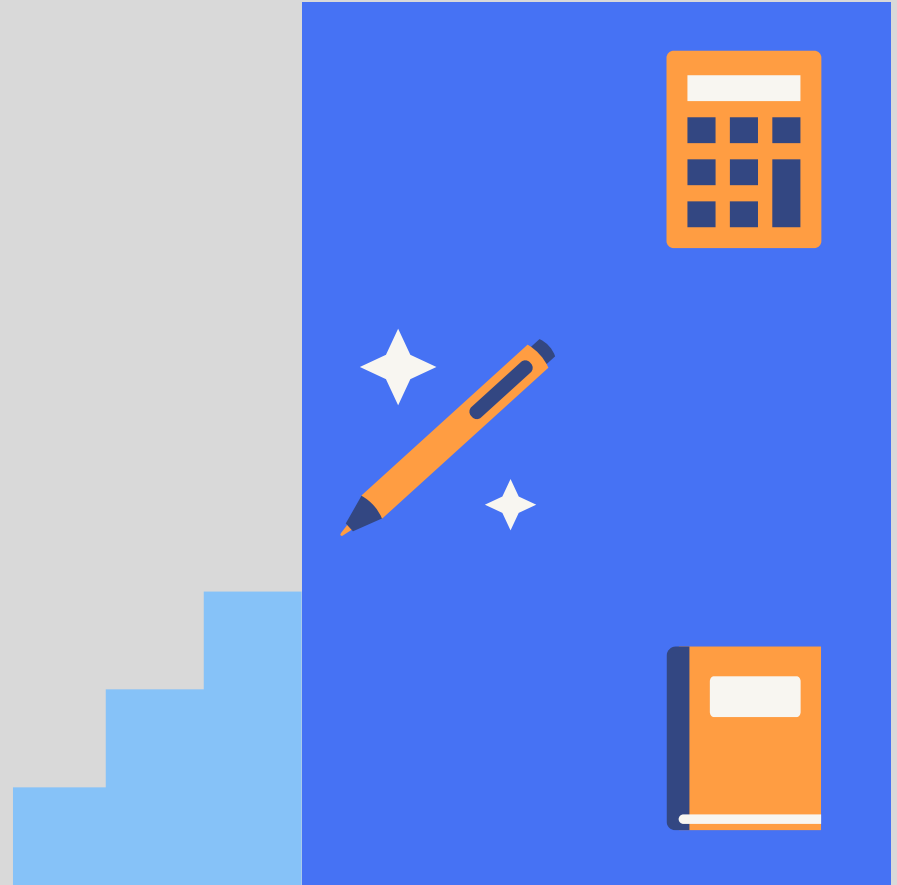




# Learning Effectively With your Personal Learning Device (PLD)

Students' Briefing





1.

## Learning with your PLD





# What is the PLD Initiative and why is it necessary?

- The PLD Initiative is intended to equip all of you with digital skills.
- These skills are required for you to be future-ready as you navigate an increasingly digitalised world.
- You will own a PLD to support you to develop these digital skills.



# How will you be using your PLD?



**Collaborative learning**



**Teaching and Learning**



**Self-directed learning**



**Home based learning (HBL)**



2.

## Device Information





# BPGHS Personal Learning Device (PLD)

## Acer TravelMate Spin TMB312RN-31 Convertible 12.2" (Enhanced)



### Specifications

Microprocessor : Intel N250 processor

Capacity : 256 GB

RAM : 8 GB

Power Adaptor: 45W Power Supply

Resolution : 1920 x 1200

Weight : 1.48kg

OS : Windows 11

Screen Size : 12.2"

Touchscreen : Yes

Battery Size : Up to 10 hours

Connections : 2x USB-A, 1x USB-c, 1x HDMI

Headphone jack : Yes

MicroSD Slot : Yes

Bluetooth : 5.3



# BPGHS Personal Learning Device (PLD)



## Certified Durability

This rugged laptop features MIL-STD-810H certification, a spill-resistant keyboard, reinforced IO ports, and a shock-absorbent bumper that protects from drops of up to 122cm.

The school chose the device because:

- It operates on Windows 11
- Teaching & Learning Affordances
  - Touch screen
  - Inking function
- Good functionality at an affordable price
  - Durable casing (prevents breakage)
  - Moisture resistant keyboard and touchpad



# BPGHS Personal Learning Device (PLD)

## Device Bundle includes

- Active Stylus Pen
- 45W Power Adaptor
- Mouse (Wired)
- Carrying bag
- 3 years Insurance and Warranty

The PLD will come with the **Enhanced Device Bundle** which includes:

- 3-year warranty and,
- 3-year insurance (2 repairs or 1 replacement claim)





3.

## Providing a Safer Digital Environment for Learning with the Device Management Application (DMA)



# What is DMA?

- Your PLD will be installed with a Device Management Application (DMA).
- The DMA will be uninstalled from your device when you graduate or leave the school.



# How does the DMA Work?

The DMA has three components.



## Mobile Device Management Service (MDM)

Protects you from harmful online content, and sets helpful limits on the use of the PLD

## Classroom Management Service (CMS)

Helps your teacher manage the PLDs during lessons, and to easily share relevant apps, websites and lesson materials

## Usage Management Service (UMS)

Allows the installation of relevant apps for learning and helps support device security





4.

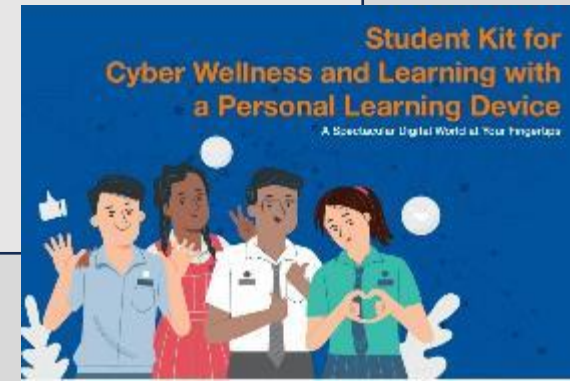
## Importance of Cyber Wellness





# Importance of Cyber Wellness

- Besides using DMA, a safe digital environment also depends on your own digital use and habits
- Refer to the Student Kit for CW and Learning with a PLD for tips on how to develop good digital habits





5.

## Safeguarding your Data and Privacy





# Four types of data collected by DMA



## Data for DMA Administrative Purposes

i.e., students' and parents'/guardians' information (name, school name, email addresses, class), apps installed and device information



## Data for Web Content Filtering

i.e., URLs accessed, date and time of access and student profile (name, school name)



## Data for Application Management

i.e., installed apps and programs, date and time the apps and programs were last updated and application error data



## Data for Sharing Students' Screen

i.e., 'live' screen view, screen view will not be stored



# The DMA does NOT collect any of these data

- Login IDs and passwords entered into websites or into any applications
- Actions performed (e.g. posts, online comments, items added to a shopping cart, etc.) when visiting websites and using apps
- Documents and photos stored in the PLD
- PLD location
- Webcam videos and microphone recordings





6.

**DMA for In-School and After-School PLD use**



# DMA will be applied to all PLDs for in-school PLD use

**During school hours, the DMA will follow MOE/School settings for:**

- Web content filtering including social media sites, pornography, gambling, extremist and violence-related sites
- Apps and programs installed for teaching and learning



# Parents are given a choice to opt for alternative DMA settings after school hours

- **After school**, the in-school DMA settings will **continue by default**. Restrictions to PLD usage time will also apply.
- However, your parents may have different preferences for after-school PLD use.
- Your parents can choose between two other options, in addition to the Default option.





# What are the Different After-School DMA Parent Options?

Default	Option A	Option B
<p data-bbox="202 371 627 491"><b>In-school DMA settings will continue after school hours</b></p> <p data-bbox="164 551 666 857">For parents/guardians who want their child's/ward's use of the device to be restricted only to teaching and learning, and prefer to leave it to the school to decide on DMA settings after school hours.</p>	<p data-bbox="724 371 1236 491"><b>DMA settings can be modified by Parents/Guardians after school hours</b></p> <p data-bbox="724 551 1236 769">For parents/guardians who prefer to take charge of the level of restrictions for their child's/ward's use of the device after school hours regulated by the DMA.</p>	<p data-bbox="1323 371 1758 447"><b>DMA will be inactive* after school hours</b></p> <p data-bbox="1284 507 1806 677">For parents/guardians who do not want their child's/ward's use of the device after school hours to be regulated by the DMA at all.</p>

\*No data will be collected after school hours when the DMA is inactive.

- The school will provide your parents/guardians with more information on exercising the options.
- Your parents/guardians can also request to change their choice of After-school DMA Parent Option subsequently.



# Which After-School DMA Parent Option is the best for me?

To help your parents decide a setting that is best suited for your learning, consider having a conversation with your parents with the following questions:

- How much time will I spend on my device?
- How well am I able to regulate my device usage on my own?
- Do I get easily distracted while doing online learning?



When considering the questions, don't forget the purpose of the PLD. It is for your learning needs and to support you to develop your digital skills. Let's use it safely and responsibly!





7.

## Debunking Myths about the DMA



# Myth 1: DMA tracks my online activities and is meant to spy on me.

- DMA is not intended to spy on you. DMA does not track the following:
  - Login IDs and passwords entered into websites or into any applications
  - Actions performed (e.g. posts, online comments, items added to a shopping cart, etc.) when visiting websites and using apps
  - Documents and photos stored in the PLD
  - PLD location
  - Webcam videos and microphone recordings



## Myth 2: DMA will have access to all my personal information and files stored on the PLD.

- Your personal identifiable data like passwords, addresses, and identification number will **not** be stored in the DMA.
- Actions performed when visiting websites and using apps are **not** captured.
- DMA does **not** allow MOE, your school, or your teachers to access folders or files on your PLD.





## Myth 3: Anyone can easily access my personal data that is collected by DMA.

- All user data collected by MOE will be stored in secure servers managed by appointed DMA Vendors with stringent access controls.
- The Government has put in place personal data protection laws and policies to safeguard sensitive data collected by public agencies.



## Myth 4: With WhatsApp blocked, I will not be able to contact my teachers outside of lesson time.

- Since the PLD is intended to be a device primarily for teaching and learning, the DMA restrictions create a safer digital environment for learning, with fewer distractions such as social media, that might otherwise detract from your learning.
- There are other platforms (e.g. iCON email) that you and your teacher can use to communicate outside school hours.



## Myth 5: I can only use the teaching and learning applications my school installed on my PLD.

- During school hours, you should only be accessing teaching and learning apps installed by your school.
- After school hours, you can use your PLD to pursue your own learning interests, even if they are not covered by your school's subject curricula and programmes.
- If your parents/guardians want to install additional learning software on your PLD, they can opt for **Option A** or **Option B**. This will allow them to install learning software for your use after school hours.



8.

What's Next?



# What can you expect next?

Time Frame	Activity
10 Jan 2025	Engagement resources for your parents/guardians will be shared.
March	<b>Access Student Kit for Cyber Wellness and Learning with a Personal Learning Device</b> <i><a href="https://go.gov.sg/cwstudentkit">https://go.gov.sg/cwstudentkit</a></i>
March	<b>Collection of devices</b>





# IMPORTANT

- Parents / Guardians have to select 'Yes' or 'No' in Parents Gateway to indicate if they are purchasing the PLD or using their own computing device.

By selecting "Yes," you agree to the purchase of the PLD, the installation of the DMA, and the collection and use of your and your child's/ward's personal data, limited to what is necessary for the DMA to function effectively.

If you select "No", it means that you will be using your child's/ward's own computing device in lieu of the school-prescribed PLD. Please note that the personal computing device must be on the same Operating System (OS) to facilitate installation of the DMA at a later date. The school will contact you to arrange for the personal computing device to be assessed, to deem it suitable to facilitate learning.

For parents/guardians of Singapore Citizen students, please also fill in the online Edusave Standing Order (SO) should you wish to use your child's/ward's Edusave for the PLD purchase, if you have not done so previously.





# IMPORTANT

- Students using their own computing device will have to bring the device to the school at a later date for the DEs to check that it is on the same Operating System (OS) as the school's PLD to facilitate installation of the DMA.
- Parents / Guardians have to indicate their preferred collection method, whether it is from the school or the collection centre.
- Parents / Guardians may obtain the hard copy form from the General Office, starting from 10 Jan 2025, if they are not yet onboard Parents Gateway.





**If you have any queries**

**Please contact:**

**Miss Dewi (ICT Manager)**

**[dewi\\_rosyati\\_sheik@moe.edu.sg](mailto:dewi_rosyati_sheik@moe.edu.sg)**







Ministry of Education  
SINGAPORE